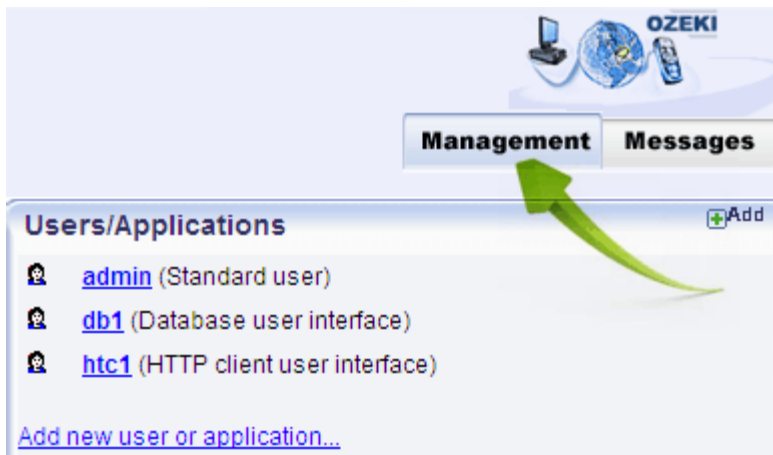




M4E Back End Default Settings Series

db1 (Database user interface object) – Configuration

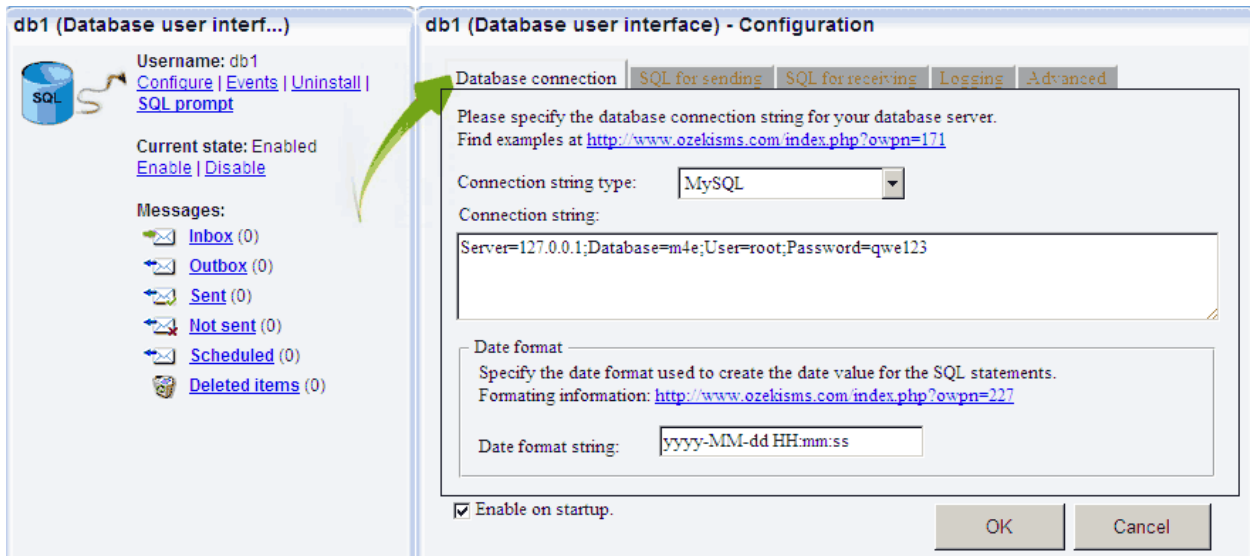
Ozeki NG® - SMS Gateway software serves as the M4E platform back end, supporting multiple connector or service provider components that communicate with the SMS messaging network. This document shows default SQL and connection values found in **db1 (Database user interface)** - Configuration tabbed object. Under each tab screen capture image corresponding values are shown within a border. These settings maintain communications with the front end M4E application. If you lose these default settings, paste these values back into their associated configuration tabs.



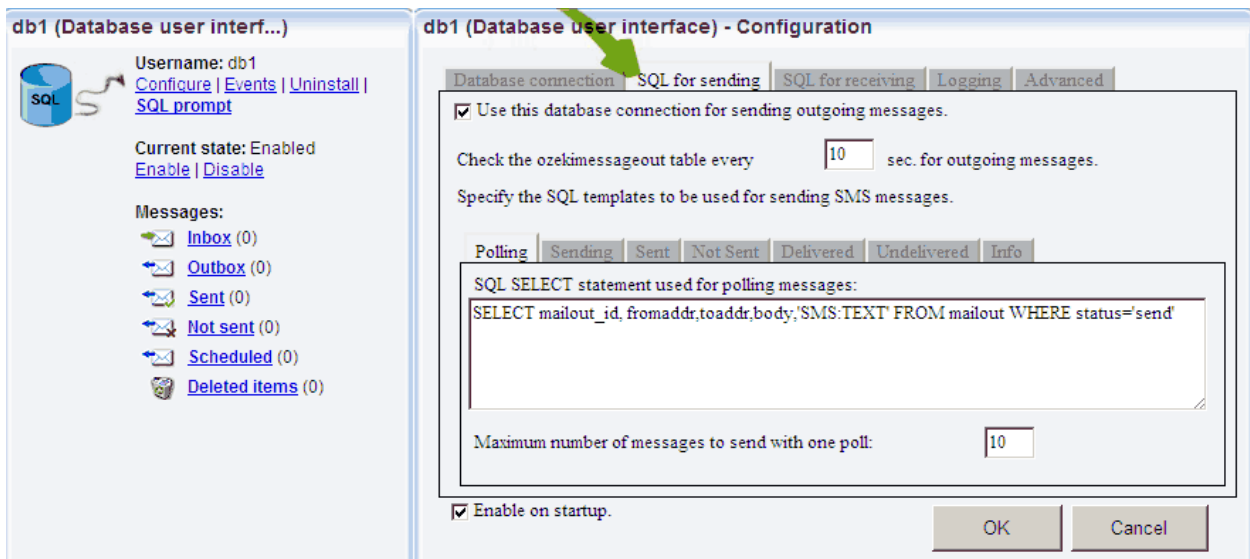
To get to this interface, first select the Management command button at top right of Ozeki NG Gateway. Next select **db1** (Database user interface) under **Users/Applications**.



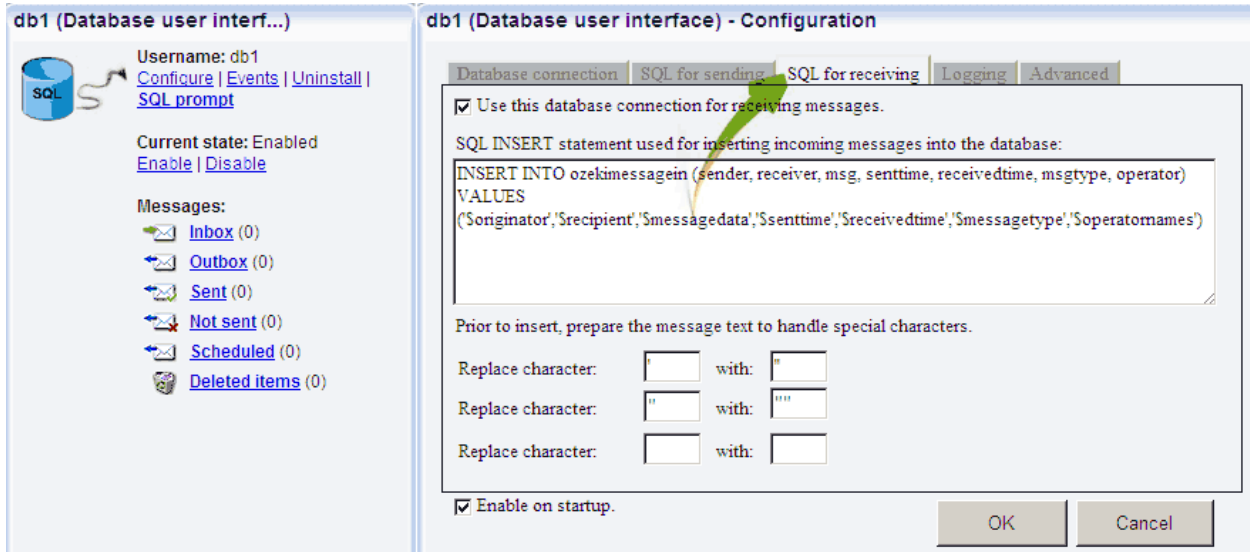
Select **Configure**



Server=127.0.0.1;Database=m4e;User=root;Password=qwe123



SELECT mailout_id, fromaddr,toaddr,body,'SMS:TEXT' FROM mailout WHERE status='send'



```
INSERT INTO ozekimessagein (sender, receiver, msg, senttime, receivedtime, msgtype, operator)
VALUES
('$originator','$recipient','$messagedata','$senttime','$receivedtime','$messagetype','$operatornames')
/mnt/linuxsms/OzekiNG/bin/Linux/Logs
```

